

## Free Introductory CompuServe Membership

As a valued GameTek customer, you are eligible for a special offer to receive a FREE introductory membership to CompuServe — the world's largest on-line information service. By joining CompuServe, you can receive the latest news and product announcements concerning GameTek games. From the Game Publishers Forum [GO GAMEPUB], you can download updates to your favorite computer games or obtain demos of soon-to-be-released computer games. You will also be able to trade tips, hints and strategies with other GameTek computer and cartridge game players in the Gamers Forum [GO GAMERS].

To take advantage of this special offer, call toll-free 1-800-524-3388 and ask for Representative #436 to get your introductory CompuServe membership which includes a personal User ID, password, \$15 usage credit and an entire month's worth of basic services free.

## Game Hint and Tip Line

1-900-903-GAME (4263)

- 80c per minute charge
- Touch tone phone required
- Minors must have parental permission before calling
- Available 24 hours

14

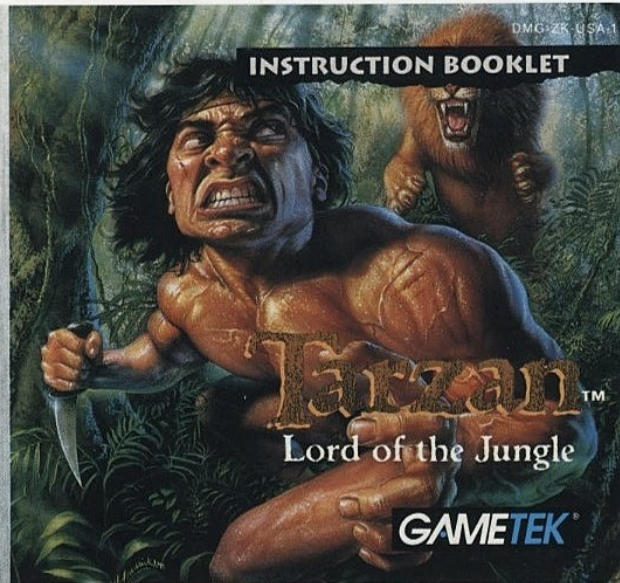
### Credits

**GAMETEK**

Developer: Eurocomm  
Producer: Travis Williams  
Executive Producer: Rod Humble  
Art Director: John Tombley  
Production Manager: Sherry Kross  
Quality Assurance: Bobby King

Nintendo

GAME BOY





THIS OFFICIAL SEAL IS YOUR ASSURANCE THAT NINTENDO HAS APPROVED THE QUALITY OF THIS PRODUCT. ALWAYS LOOK FOR THIS SEAL WHEN BUYING GAMES AND ACCESSORIES TO ENSURE COMPLETE COMPATIBILITY WITH YOUR GAME BOY SYSTEM. ALL NINTENDO PRODUCTS ARE LICENSED BY SALE FOR USE ONLY WITH OTHER AUTHORIZED PRODUCTS BEARING THE OFFICIAL NINTENDO SEAL OF QUALITY.

LICENSED BY



NINTENDO, GAME BOY AND THE OFFICIAL SEALS ARE REGISTERED TRADEMARKS OF NINTENDO OF AMERICA, INC. © 1989 NINTENDO OF AMERICA, INC.

# Tarzan™ Lord of the Jungle

Thank you for buying Tarzan™ for Game Boy. We suggest you read the manual completely before playing the game.

**WARNING: PLEASE READ THE ENCLOSED CONSUMER INFORMATION AND PRECAUTIONS BOOKLET CAREFULLY BEFORE USING YOUR NINTENDO™ HARDWARE SYSTEM OR GAME PAK.**

## IMPORTANT

1. Always make sure the power is turned off before inserting or removing the Game Pak.
2. Do not disassemble your Game Pak.
3. Keep your Game Pak away from direct sunlight, hot and cold temperatures.
4. Do not bend or crush your Game Pak.
5. Keep your Game Pak in its protective case when not in use.
6. If your Game Pak is dusty or dirty clean it with a soft, dry cloth. Do not use thinners, solvents, benzene, or alcohol. These can damage your Game Pak.



TARZAN™ owned by Edgar Rice Burroughs, Inc., used by permission. All rights reserved.  
© 1994 GameTek, Inc. GameTek is a trademark of JE, Inc.  
Three Harbor Drive, Suite 110, Sausalito, CA 94965.

2

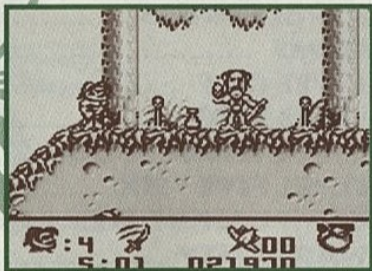
# CONTENTS

LORD OF THE JUNGLE .....	4
CONTROLS .....	5
THE JUNGLE .....	6
JUNGLE SKILLS .....	7
ITEMS .....	8
LEVEL ONE .....	10
LEVEL TWO .....	11
LEVEL THREE - FOUR .....	12
LEVEL FIVE - SIX .....	13
COMPUSERVE MEMBERSHIP .....	14
WARRANTY .....	15

3

# LORD OF THE JUNGLE

Though your parents were Lord and Lady Greystoke, you were born in an African jungle and raised by a giant she-ape. Now grown strong and wise in the ways of the wild, you are a lord as well-- Lord of the Jungle. You have taken responsibility for the safety of the animals and forests in your realm. To protect them, you will fight hunters, put out fires, and explore ancient cities. You are Tarzan, mighty warrior, as at home in the jungle as other men are in a city, master of your world.



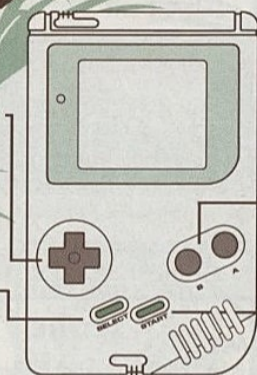
# CONTROLS

## CONTROL PAD

Press the Control Pad in the direction you want to move.

## SELECT BUTTON

To switch between your weapons, press the Select Button.



## A BUTTON

When you want to jump, push the A Button.

## B BUTTON

To fight with your selected weapon, press B.

## START BUTTON

To pause the action, push Start. Push Start again to resume.

# The Jungle

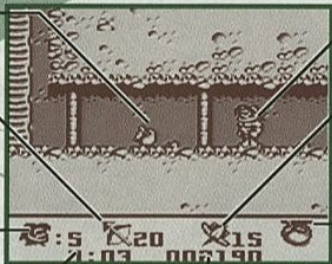
## ITEMS

### WEAPONS

Shows which weapon you are using and how much ammo it has.

### LIVES

Look here to see how many lives you have.



### TIME

This is how much time is left to complete the level.

### SCORE

6

## TARZAN

### OBJECTS

Objects are shown here, and how many are left to find.

### APPLE

As you lose life energy, this apple becomes empty.

# Jungle Skills

The jungle is filled with peril. In protecting your realm, you will have to climb trees, swing on vines, and swim through dangerous waters.

### COLLECT ITEMS

On each level are a number of items. You must find them all before you can move to the next level.

### CONTINUE

Restart points are halfway through each level. You return to the last one passed after losing a life.

### MODE

You must hit enemies more times to defeat them in the Normal Mode than in the Easy Mode.

### POWER ITEMS

Defeated enemies will drop many valuable items. Watch for these and pick them up when you can.



7

TARZAN™

Copyright © 1994 Edgar Rice Burroughs, Inc.

Copyright © 1994 GameTek, Inc.

Developed By Eurocom For GameTek, Inc.

SELECT SKILL LEVEL  
NORMAL

# ITEMS

## GUN



The gun has a limited number of bullets, but you can aim in all directions. Shooting enemies inflicts the most damage on them.

## BOW & ARROW



You learned your skill with bow and arrow from the jungle natives. Using this weapon causes half as much damage as the gun.

## SPEAR



Attack larger enemies with the spear. It will inflict more damage on them than your knife.

## STONES



Look for these stones when you want to attack enemies from a distance. They are especially useful against enemies below you.

## APPLES



Keep your eyes open for this important food. Every time you collect an apple, your life meter will be restored by 50%.

## CONTINUES



When you lose all your lives, use Continue to return to the last level you were on. Keep a stock of Continues by collecting these items when you can.

## EXTRA LIFE



One of your friends, a powerful witch doctor, made several tiny copies of your head and scattered them around the jungle. They are powerful medicine. Each time you collect one, you gain an extra life.

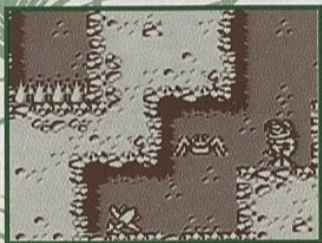
## HOURLASS



Pick up this little clock to increase the amount of time you have left to complete the level.

## LEVEL ONE

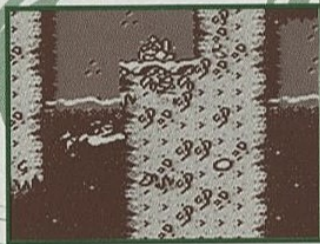
The great ape, Tarzan's friend, is very ill. To cure him, you must go to the witch doctor. He will send you off to find the special ingredients needed to create a healing potion. Finding and gathering the ingredients will not be easy, and you must hurry.



10

## LEVEL TWO

A plane carrying gold stolen from the natives has crashed into the river. You must find the gold and restore it to its rightful owners. But to regain it, you will have to swim the river, fighting crocodiles, piranhas, jelly fish, and face many other dangers.



11

## LEVEL THREE

A raging fire consumes the jungle! You have to brave the scorching flames and search for the poor animals trapped in the fire. You cannot rest until all are safe.



## LEVEL FOUR

Poachers have invaded the elephant's graveyard. After taking the ivory, they captured the baby elephants. You must free the babies and return them to the jungle.



## LEVEL FIVE

The hunters have also caught several great apes and are holding them in their village. You must rescue them before they are shipped to the British museum.



## LEVEL SIX

Furious and seeking revenge, the hunters have kidnapped Jane and hidden her away in the Lost City. As you seek her, beware of the many traps in the City.



## Free Introductory CompuServe Membership

As a valued GameTek customer, you are eligible for a special offer to receive a **FREE** introductory membership to CompuServe — the world's largest on-line information service. By joining CompuServe, you can receive the latest news and product announcements concerning GameTek games. From the Game Publishers Forum [GO GAMEPUB], you can download updates to your favorite computer games or obtain demos of soon-to-be-released computer games. You will also be able to trade tips, hints and strategies with other GameTek computer and cartridge game players in the Gamers Forum [GO GAMERS].

To take advantage of this special offer, call toll-free 1-800-524-3388 and ask for Representative #436 to get your introductory CompuServe membership which includes a personal User ID, pass word, \$15 usage credit and an entire month's worth of basic services free.

### Game Hint and Tip Line

**1-900-903-GAME (4263)**

- 80c per minute charge
- Touch tone phone required
- Minors must have parental permission before calling
- Available 24 hours

#### ■ Credits

**GAMETEK**

Developer: Eurocomm  
Producer: Travis Williams  
Executive Producer: Rod Humble  
Art Director: John Tombley  
Production Manager: Sherry Kross  
Quality Assurance: Bobby King