

Look for this brand new hit  
from Konami!

PRINTED IN JAPAN

Nintendo

GAME BOY



KIDS TO ADULTS  
K  
CONTENT RATED BY  
ESRB



DMG-AGDE-USA

**MYSTICAL NINJA**  
starring GOEMON

INSTRUCTION BOOKLET

**WARNING: PLEASE READ THE ENCLOSED CONSUMER INFORMATION AND PRECAUTIONS BOOKLET CAREFULLY BEFORE USING YOUR NINTENDO® HARDWARE SYSTEM OR GAME PAK.**

**THIS PRODUCT HAS BEEN RATED BY THE ENTERTAINMENT SOFTWARE RATING BOARD. FOR INFORMATION ABOUT THE ESRB RATING, OR TO COMMENT ABOUT THE APPROPRIATENESS OF THE RATING, PLEASE CONTACT THE ESRB AT 1-800-771-3772.**



THIS OFFICIAL SEAL IS YOUR ASSURANCE THAT NINTENDO HAS APPROVED THE QUALITY OF THIS PRODUCT. ALWAYS LOOK FOR THIS SEAL WHEN BUYING GAMES AND ACCESSORIES TO ENSURE COMPLETE COMPATIBILITY. ALL NINTENDO PRODUCTS ARE LICENSED BY SALE FOR USE ONLY WITH OTHER AUTHORIZED PRODUCTS BEARING THE OFFICIAL NINTENDO SEAL OF QUALITY.

LICENSED BY



NINTENDO, GAME BOY AND THE OFFICIAL SEALS ARE REGISTERED TRADEMARKS OF NINTENDO OF AMERICA INC. © 1989 NINTENDO OF AMERICA

## Mystical Ninja Starring Goemon

### Contents



Starting up .....	4
How to play .....	5
Game flow .....	6
Game screen .....	7
Using the Controller .....	8
Attacking .....	9
Items .....	10
Stages .....	11
The Surprise Match .....	12
Character profiles .....	14

Correctly insert the Game Boy Game Pak into the Super Game Boy. Next, insert the Super Game Boy into the Super NES and move the power switch on the Super NES to the ON position. For further operation information, please consult your Super Game Boy and/or Super NES instruction manual.

## Starting up

Correctly insert the Game Boy Game Pak into your Game Boy unit, and switch on the power. Select either "NEW GAME" or "PASSWORD" from the Title screen with the Control Pad, and press the A button to set.

- **NEW GAME**

Play the game from the beginning.

- **PASSWORD**

Input PASSWORD to play the game from the stage you last left off.

If you select "NEW GAME", the Chapter 1 Title screen will appear, followed by the Character Select screen. Choose to play as either Goemon, Ebisumaru, or Sasuke, then start the game.

When you clear a stage, the Title screen for the next chapter will appear, followed by the Character Select screen. Choose one of the characters you haven't selected before, then continue playing.

- You can play as any character you want once you reach Chapter 4.



## How to play

- "Mystical Ninja Starring Goemon" is an action role-playing game. You must collect information and items, and defeat the boss characters that lie in wait for you in each stage to progress.
- You have a certain amount of strength. When you take damage from enemy attack, or fall into holes, rivers or the ocean you lose strength. If you completely run out of strength the game ends.
- You can regain strength by staying in inns or buying items.
- You will find a variety of items with different effects as you progress through the game.

### About "PASSWORD"

When you clear a chapter, a PASSWORD made up of a combination of 16 different icons (bamboo pipe, bomb, etc) will appear on screen. Select "PASSWORD" at the Title screen to switch to the PASSWORD Input screen. If you correctly input the 14 icons of the PASSWORD in order, you will be able to start playing from the start of the stage corresponding to that PASSWORD. If you have made a mistake when inputting the PASSWORD, an error warning will sound. You can reinput as many times as you like if you make a mistake. To exit, press A + B + Start + Select at the same time. If you notice you've made a mistake while you're still inputting, press the B button to delete one character at a time.





## Game flow

This is how the game is structured.

### Character select

Select either Goemon, Ebisumaru, or Sasuke to be your character.

### Game starts

### Sword Battle Action mode

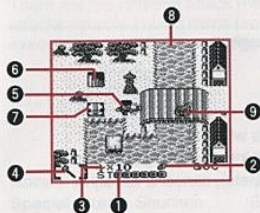
This mode is made up of an outside scene and a dungeon scene. You start outside, fighting enemies and collecting information, items and clear items.

### Surprise Match mode

A boss character lies in wait for you at the end of the dungeon scene. If you defeat him, you clear the stage.

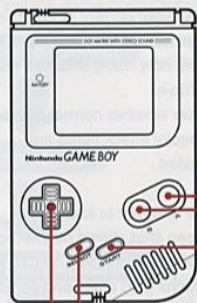


## Game screen



- 1 **ST**..... Shows your current strength level.
- 2 **Gold Coin**..... Shows how much money you have.
- 3 **Shuriken**..... Shows how many shuriken (daggers) you have.
- 4 **Attack items**..... Shows whether normal attack items or special attack items are activated.
- 5 **Player**
- 6 **Level**..... Move to upper or lower level.  
(Screen shot shows player moving to lower level.)
- 7 **1000-coin box**..... Contains gold coins and items.
- 8 **River**..... If you fall into the river your strength level decreases by one.
- 9 **Enemy**

## Using the Controller



### ● A button

Jump, advance through conversations, set a variety of selections

### ● B button

Set variety of attacks when fighting, talk to other characters, get information, get items (from 1000-coin box, etc), cancel a variety of selections

### ● Start button

Switch through game screens

### ● Select button

Switch between normal attacks or special attacks

### ● Control Pad

Move character, move cursor

## Attacking

There are two different attack methods you can use to progress through the game; normal attacks executed using items (each character uses a different item), and special attacks executed using a shuriken (dagger).



### Goemon

Normal attack: Pipe

Special attack: Shuriken



### Ebisumaru

Normal attack: Fan

Special attack: Shuriken



### Sasuke

Normal attack: Kunai (ninja weapon)

Special attack: Shuriken

- When your strength is at maximum, you can do special attacks as well by simply doing a normal attack. (You throw one shuriken per attack.)

You can obtain your character's ultimate weapon by picking up its item.

**Goemon's ultimate weapon:** The First Pipe

**Ebisumaru's ultimate weapon:** The Fan of Heaven

**Sasuke's ultimate weapon:** The Legendary Kunai

## Items

### ● Consumable items

You can buy these items or get them from the 1000-coin box



**Gold Coin**

You'll need gold coins to buy other items.



**Rice Ball**

Replenishes your strength level by one



**ST Tablet**

Returns your strength level to maximum.



**Shuriken**

A throwing dagger all characters can use.

### ● Level-up items

There are two kinds of level-up items; those that increase your strength and those that increase your attack power.



**Crystal of Life**

Adds one extra unit to your strength level.



**The First Pipe**

Can only be used by Goemon.



**The Fan of Heaven**

Can only be used by Ebisumaru.



**The Legendary Kunai**

Can only be used by Sasuke.

### ● Clear items

You'll need these to clear the stages.



**Bamboo**

Enables you to move across the river.



**The Sign of the Black Ship Gang**

Enables you to board the Black Ship Skull.



**Bomb**

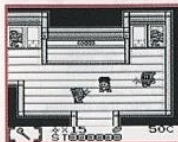
You'll need this to blow things up.



**The Conch Shell**

Used to summon Impact.

## Stages



**Chapter 1**  
Gadget Castle



**Chapter 3**  
The Black Ship Skull



**Chapter 2**  
The Demon Cave



**Chapter 4**  
The Skull, Once Again



**Chapter 5**  
Skeleton Island



## The Surprise Match



### The 100-Meter Dash

Try to get to the finish line before your opponent by pressing the A button repeatedly.



### Tug-O-War

Test your strength by pressing the A button repeatedly to pull your opponent into the center.



### Lantern Attack

Move the cursor with the Control Pad and press the A button to pick which of the 6 lanterns doesn't belong.



### Contest of Nerves

Move the cursor with the Control Pad and press the A button to turn over the cards. Try to collect all 8 different patterns of two cards each.



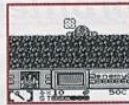
### Face-to-Face

Use the Control Pad to make your character jump forwards. Memorize the order in which the different faces appear, then change all the panels to the face of the character you are currently using.



### Octopus Whack

Each button on your Game Boy unit corresponds to one of the jars. Hit the buttons to whack all the octopi as they come out!

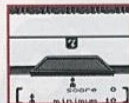


### Last Battle

Take on the final boss by moving the target left/right with the Control Pad, and pressing the A button to punch!

## Events

There are events in each stage. If you win you'll receive items or other rewards.



### Roulette

Shoot three arrows at the roulette wheel to make a score equal to or greater than the target value.



### The Quiz Contest

You must get at least five answers correct in this quiz.



## Character profiles



### Goemon

Born to fight for justice, Goemon helps the weak and fights the strong, his trademark pipe in hand!



### Sasuke

A robot ninja, Sasuke is a powerful ally of Goemon's.

### Ebisumaru

A glutton who likes to take it easy, Ebisumaru is nevertheless the best person to have around when the going gets tough (or so he says). He is Goemon's trusted companion.



### Yae

The only female in Goemon's group, Yae is an unrivalled ninja fighter, said to be the most deadly in all Edo (Old Tokyo).



14



### Black Octopus



### Baron Skull

Leader of the Black Ship Gang, Baron Skull aims to take over the world. No-one has ever seen his real face, and his true form remains a mystery. The Baron controls the giant robots Skull King 1, 2 and 3 and challenges Goemon and his friends to their final battle.

### The Great Demon Shene



### First Officer Sree

(Mechanical Robots 1, 2, and 3)

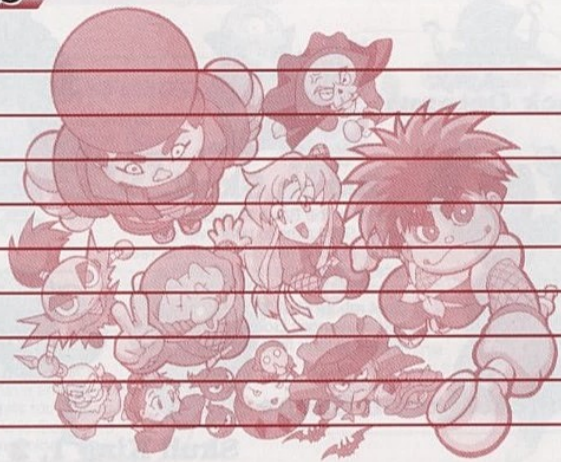


### Skull King 1, 2 and 3

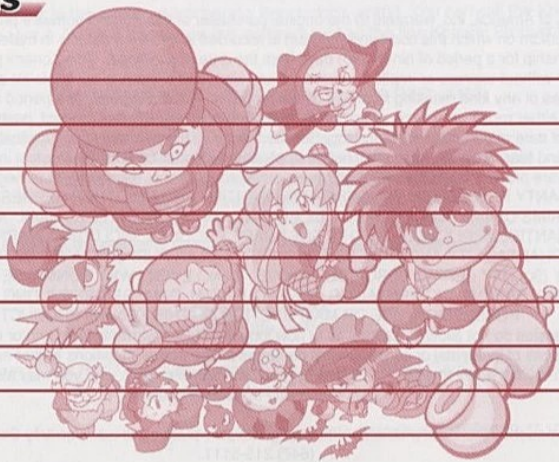
15



## Notes



## Notes



## KONAMI OF AMERICA, INC. LIMITED WARRANTY

Konami of America, Inc. warrants to the original purchaser of this Konami software product that the medium on which this computer program is recorded is free from defects in materials and workmanship for a period of ninety (90) days from the date of purchase. This Konami product is sold "as is," without express or implied warranty of any kind, and Konami is not liable for any losses or damages of any kind resulting from use of this program. Konami agrees for a period of ninety (90) days to either repair or replace, at its option, free of charge, any Konami product, postage paid, with proof of date of purchase, at its Factory Service Center. This warranty is not applicable to normal wear and tear. This warranty shall not be applicable and shall be void if the defect in the Konami software product has arisen through abuse, unreasonable use, mistreatment or neglect. THIS WARRANTY IS IN LIEU OF ALL OTHER WARRANTIES AND NO OTHER REPRESENTATIONS OR CLAIMS OF ANY NATURE SHALL BE BINDING ON OR OBLIGATE KONAMI. ANY IMPLIED WARRANTIES APPLICABLE TO THIS SOFTWARE PRODUCT, INCLUDING WARRANTIES OF MERCHANTABILITY AND FITNESS FOR A PARTICULAR PURPOSE, ARE LIMITED TO THE NINETY (90) DAY PERIOD DESCRIBED ABOVE. IN NO EVENT WILL KONAMI BE LIABLE FOR ANY SPECIAL INCIDENTAL OR CONSEQUENTIAL DAMAGES RESULTING FROM POSSESSION, USE OR MALFUNCTION OF THIS KONAMI PRODUCT.

Some states do not allow limitations as to how long an implied warranty lasts and/or exclusions or limitations of incidental or consequential damages so the above limitations and/or exclusions of liability may not apply to you. This warranty gives you specific rights, and you may also have other rights which vary from state to state.

If you experience technical problems with your game pak, please call our Warranty Services number (847) 215-5111.

## CONSUMER SUPPORT

If you feel stuck in the game, or just need a boost, don't worry! You can call the Konami Game Hint & Tip Line for help on this software and all the fine Konami Products.

KONAMI GAME HINT & TIP LINE • 1-900-896-HINT (4468)

- 85¢ per minute charge
- \$1.15 per minute support from a game counselor
- Touch tone phone required
- Minors must have parental permission before dialing

Hints are available 24 hours a day.

Live support Monday - Friday 8:30 A.M. - 5:00 P.M. CST only.

Prices and availability are subject to change. U.S. accessibility only.

## KONAMI ONLINE

World Wide Web - <http://www.konami.com>

CompuServe: Click FIND then type Konami. We are in the Video Gaming Central forum. To join CompuServe please call 1-800-524-3388.

Konami of America, Inc., 900 Deerfield Parkway, Buffalo Grove, IL 60089-4510



DEVELOPED BY KONAMI COMPUTER ENTERTAINMENT NAGOYA Co., Ltd.