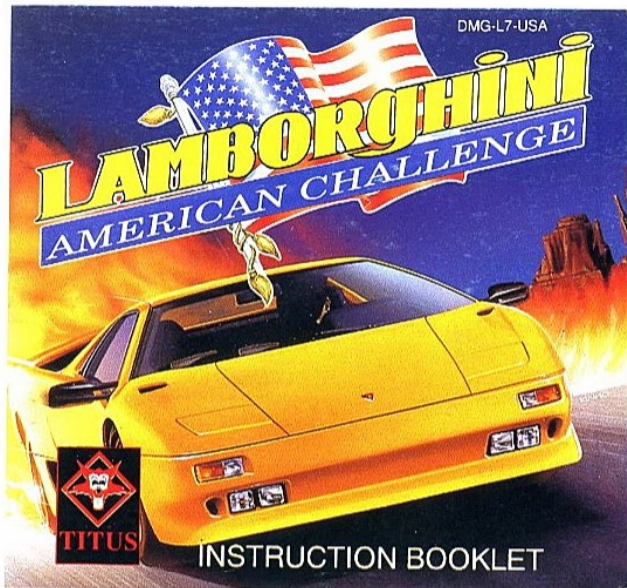


TITUS SOFTWARE CORP.
20432 CORISCO STREET
CHATSWORTH, CA 91311

PRINTED IN JAPAN

Nintendo
GAMEBOY





This official seal is your assurance that Nintendo has approved the quality of this product. Always look for this seal when buying games and accessories to ensure complete compatibility with your Game Boy System. All Nintendo products are licensed by sale for use only with other authorized products bearing the official Nintendo seal of quality.

LICENSED BY



NINTENDO, GAME BOY AND THE OFFICIAL SEALS ARE TRADEMARKS OF NINTENDO OF AMERICA INC.

①

THANK YOU

Thank you for buying "**LAMBORGHINI AMERICAN CHALLENGE**" by **TITUS** for your Nintendo Game Boy® unit.

WARNING: PLEASE READ THE ENCLOSED CONSUMER INFORMATION & PRECAUTION BOOKLET CAREFULLY BEFORE USING YOUR NINTENDO® HARDWARE SYSTEM OR GAME PAK.

②

INTRODUCTION

You've just arrived in the United States with your heart set on becoming a millionaire. Since your only skill is advanced race-driver training, you decide to enter the Saturday Night Races, an organized tournament of illegal highway challenges.

As chance would have it, you run into an old friend down on his luck. In order to recoup some of his lost wealth, he sells you his prized Lamborghini Diablo at a rock-bottom price. This uses up all but a few thousand dollars of your life savings.

Despite your lack of funds, your sights are firmly set on reaching the first Division of this competition. To do this, you must start by winning easy races in Division 4, until you have enough skill and money to enter more difficult ones.

When you feel confident enough in your driving abilities, you may try the Division Challenge. If you succeed, you will progress to the next division. Races become more challenging as you progress, but you can buy more sophisticated equipment and win greater prizes.

**Good luck, and remember to be a careful and courteous driver...
... until race-day!**

3

HOW TO PLAY

Insert your "Lamborghini American Challenge" Game Pak in your Game Boy compact video game system and turn the power to the "ON" position. "NINTENDO" will appear on the screen followed by the license and copyright screen. Select the sound option: MONO / STEREO. Press **START** or **A** to see the first menu.

You may then enter a password, by selecting the **PASSWORD** icon. This enables you to re-start the game where you had left it. You may begin a new game by selecting the **NEW GAME** icon. To select either one of these options, press **SELECT** or press the control pad up or down. Press **START** or **A** to enter this choice.

To enter a password press the control pad left or right to move the cursor, then up or down to select a number or a letter, then press **A** or **START** to confirm. If you enter the right password, you will start with the same features you previously had, such as the amount of money, the division you had reached and the car parts you had bought. However, your vehicle's damage and your score will start at zero, so will your competitors. Passwords appear at the end of each race.

After selecting the **NEW GAME** option, you may select your driver (Cooper, Jenny or Joe) by using the control pad or **SELECT**, then press **A** or **START**.

4

THE CONTROLS



Control pad:

Change icons in a menu.
Move your car to the left or right during a race.



B button:

Brake during a race.

A button:

Confirm an icon in a menu.
Accelerate during a race.



START:

Confirm an icon in a menu.
Pause the game during a race.



SELECT:

Change icons in a menu.
Ignite the turbo-boost during a race.
Quit a selection screen during a race.

Notes: To quit during a race, press **START** then **SELECT** (you will lose the race).
To reset your Game Boy, press **START**, **SELECT**, **A** and **B** simultaneously.

5

YOUR MISSION

Your mission in the game is to finish the first Division.

To do so, you will have to participate in many different races. Some will be in dry weather and against novice drivers, while others will be in the rain against expert drivers, and the police may be out to catch you if you exceed the speed limit.

In each race you enter, you will encounter professional drivers as well as local drivers. The professional drivers may bet against you, and their position in the race may affect your division ranking (their pictures are shown before you start the race and their cars are indicated by a triangle during the race). The local drivers are regular drivers who do not appear in the division ranking, however, they may still be a threat when they drive aggressively.

After winning a race, you will obtain a certain amount of money depending on your position and the amount you and the other participants have bet. You will also win points which are used to determine your division ranking (This ranking is updated after each race).

You will become a better driver as you progress, therefore, you will win more races, and thus earn more money. If you buy enough equipment, your car's "vehicle class" will improve which means that it will perform better (it will go faster, have better road-holding abilities, etc...), but watch out because your competitors vehicle class will also improve.

Now that you know the rules of the game, select the right races, bet the right amount of money, and get ready for some tough action.

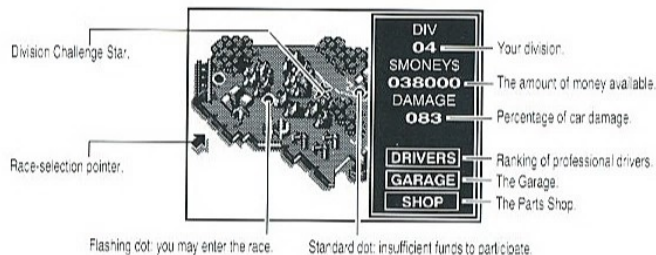
6

THE MAP OF THE UNITED STATES

The screen is divided into 2 parts. The map of the United States appears on the left. You can scroll the map by moving the pointer left or right with the control pad.

A selection panel is shown on the right. By pressing **SELECT**, the pointer will disappear. Use the control pad or **SELECT** to pick one of the following options: **DRIVERS** **GARAGE** **SHOP**

This panel also shows your division (DIV), the amount of money available (MONEY) and the damage your vehicle has suffered (DAMAGE).



7

When you select the **DRIVERS** icon, your competitors' rank appears. You may see each participant's information by pressing **SELECT** or up and down on the control pad. Their skill level depends on their rank (which appears on the left of their picture), their vehicle's class (**VEHICLE CLASS**, which ranks from 1 to 4), the number of races entered (**RACE**) and won (**WON**) and the number of points (**POINTS**). Press **START** or the **A** button to return to the map.

The **GARAGE** option indicates which division you are in (**DIV**), the amount of money available (**MONEY**) and your car's damage level (**DAMAGE**). To fix your car, select the **REPAIR** icon with the **SELECT** button or the control pad and press **START** or **A**. (A 10% repair will cost you \$200). Select the **DONE** icon to leave the shop.

The **SHOP** icon enables you to enter the parts shop. The name, a picture and the price of the option appear on-screen. The **NEXT** icon, enables you to go to the next add-on and the **BUY** icon enables you to buy a part. Select the **DONE** icon and press **SELECT** or **A** to leave the shop and return to the map of the United States.

If your car has suffered damages exceeding 50%, its performance will be reduced. If damages reach 100%, your car will stop and the race will be lost, therefore, it is very important to go to the garage regularly.

8

THE PARTS SHOP



Super brakes
to slow down fast.



Turbo-boost: gives you great
speed for 10 seconds.



Snow tires for extra grip
in icy conditions.



Speed-up N° 1
Top speed: 288 km/h.



Super tires for dry and
rainy weather.



Speed-up N° 2
Top speed: 320 km/h.



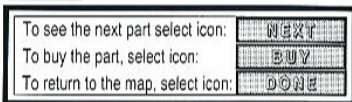
Radar to warn
of police up ahead.



Speed-up N° 3
Top-speed: 352 km/h.



Radar jammer to foil
police.



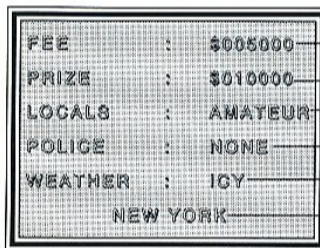
9

SELECTING A RACE

There are 12 races per division, they are represented by dots on the map. If a dot is flashing, you may enter the race. If the dot is not flashing, you will have to earn more money before you can participate.



The large star represents the Division Challenge which enables you to reach the next division (only if you have enough money to enter and manage to finish it before time runs out). You will begin the race in Division 4 and must work your way up to Division 1.

When you move the pointer to a flashing dot and press **SELECT** or **A**, a picture of the participants and the characteristics of the race appear (local participants are represented by a question mark because they are not professional drivers). Press **SELECT** to return to the map, or press **A** or **START** to begin the race.





10

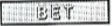
THE BETTING SYSTEM

If you select a race in which professional drivers are going to participate, the betting screen appears. If you feel you can win, you may bet on your performance. The other participants may bet against you. If you wish to bet \$100, select the  icon and press A. If you do not wish to bet or if you are done betting, select the  icon and press A.

On the betting screen, you can see the picture of the competitors, as well as the last bet (**CURRENT BET**) and the total amount of money bet so far (**POT**).

After one turn, each player has two choices:

- increase his or her stake (by selecting the  icon).
 - decide he has reached his limit and quit the betting process (by selecting the  icon).
- However, if you should win, the other players only owe an amount equal to your wager.

If you are feeling confident about your driving abilities and your car's performance, you can raise your opponents by increasing your wager by an amount greater than that of the last bet. To do so, confirm the  icon several times. This will force the other participants to either match your bet or pull out. If they match your bet, you may raise them up to three times.

11

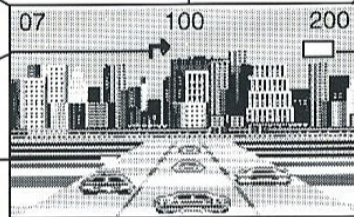
THE RACE SCREEN

This number indicates either your position in a race or a countdown in a Division Challenge.

Arrow indicates a left turn or a right turn.

White triangle indicates a rival competitor.

Percentage of the race remaining.



Your car's speedometer.

Symbol indicates that the turbo-boost is on. The number of turbo-boosts available is shown below the picture of the turbo-boost in the shop (SHOP).

During each race, your position, the percentage of the race remaining and your speed flash on the top of the screen. During the Division Challenge, the number on the left becomes a countdown of 60 seconds. If you manage to finish this challenge in less than 60 seconds, you will reach the next division. After each race, the rank of the first three competitors appears on the screen, so does the amount of money they won.

12

THE POLICE

Saturday Night Races are not ordinary races.

You may encounter a wide range of individuals, all looking for the same thing: **MONEY**.

Since state regulations prohibit these races on public roads, police patrols are sent to enforce the speed limits. The police can use the following tactics:

Speed Traps:

The police look for anyone going a margin over the speed limit (110 km/h).

You may encounter police cars on the side of the road. They will chase you and try to slow you down if you are going too fast. It is recommended to buy a radar detector to locate the patrols, and super-brakes to reduce the speed of your car rapidly.

Fines:

CAUTION: There is a speed limit on the highway, and the police are seeking offenders. If you get caught speeding, you may have to pay a heavy fine.

HINTS

Keep a close watch on your rival's vehicle class. You may want to avoid racing against cars that are better equipped than yours.

You will frequently have to choose between buying speed-up options and other additions to your car. Before opting for extras such as Super Brakes, Snow Tires, etc..., consider the "Local Racer" skills in the remaining available races. You may find yourself up against better opponents without the engine power to beat them.

Beware of racers suddenly betting large amounts. They may well feel confident that their vehicles' performance is superior to yours. You may have to resort to nasty tactics to beat them!!!

If you are feeling confident in your driving abilities, refraining from improving your vehicle's top speed may actually be more profitable. If the other racers see your car as less of a threat, they will bet more money on themselves winning. Snatching the victory will be very rewarding.

In addition, you will keep them from going up in rank too quickly. Each competitor's rank depends on the number of points he has won after a race.

You obtain three points when you win the race in first position, 2 if you finish in second position and 1 if you finish in third position.

HINTS

If a rival has a greater top speed than you, there are several ways to tackle him. On a course with many sharp bends, you can wear down his lead by skillful cornering. If you can steer around highway traffic and have fewer collisions than your opponents, victory is even more likely.

CAUTION

Keep an eye on your savings at all times so that you don't buy anything you cannot afford. If you buy a part for your car, get your vehicle repaired or pay a fine, and that leaves you without having sufficient funds to enter a race, you will automatically lose the game.

Therefore, it is advised to spend your money wisely and keep a small amount in reserve to be better prepared against adversity.

GOOD LUCK!!!

15

COPYRIGHTS

The Trademarks LAMBORGHINI and DIABLO are owned by and used under License from Automobili Lamborghini S.p.A., Italy.

Software ©1993 TITUS. LAMBORGHINI AMERICAN CHALLENGE is a software package protected by international copyright agreements. Any reproduction, adaptation, hiring or processing of the contents, including the manual is strictly unlawful.

16

NOTES

LIMITED WARRANTY

Titus warrants to the original purchaser of this Titus product that the medium on which this computer program is recorded is free from defects in materials and workmanship for a period of (90) days from the date of purchase. This Titus program is sold "as is", without express or implied warranty of any kind, and Titus is not liable for any losses or damages of any kind resulting from use of this program. Titus agrees for a period of ninety (90) days to either repair or replace, at its option, free of charge, any Titus product with proof of date of purchase.

This warranty is not applicable to normal wear and tear. This warranty shall not be applicable and shall be void if the defect in the Titus product has arisen through abuse, unreasonable use, mistreatment or neglect.

THIS WARRANTY IS IN LIEU OF ALL OTHER REPRESENTATIONS OR CLAIMS OF ANY NATURE THAT SHALL BE BINDING ON OR OBLIGATE TITUS. ANY IMPLIED WARRANTIES APPLICABLE TO THIS SOFTWARE PRODUCT, INCLUDING WARRANTIES OF MERCHANTABILITY AND FITNESS FOR A PARTICULAR PURPOSE, ARE LIMITED TO THE NINETY (90) DAY PERIOD DESCRIBED ABOVE. IN NO EVENT WILL TITUS BE LIABLE FOR ANY SPECIAL, INCIDENTAL, OR CONSEQUENTIAL DAMAGES RESULTING FROM POSSESSION, USE OR MALFUNCTION OF THIS TITUS SOFTWARE PRODUCT.

This warranty shall not be applicable to the extent that any provision of this warranty is prohibited by any federal, state or municipal law which cannot be pre-empted. This warranty gives you specific legal rights and you may also have other rights which vary from state to state.

TITUS SOFTWARE CORP.
20432 CORISCO STREET, CHATSWORTH CA 91311
(818) 709-3692