



Sony Imagesoft Inc., 9200 Sunset Boulevard, Suite 820, Los Angeles, California 90069

Printed in Japan

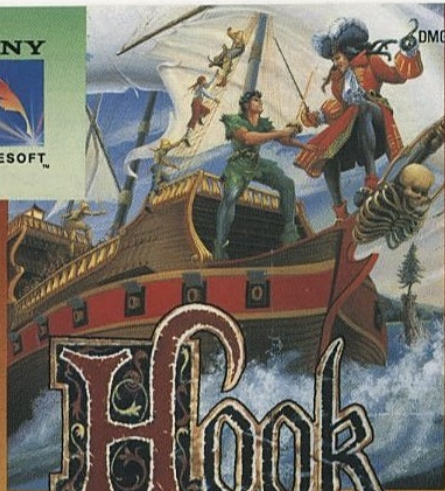
Nintendo

GAME BOY

SONY



IMAGESOFT



DMG-HS-USA

Hook

INSTRUCTION BOOKLET



THIS OFFICIAL SEAL IS YOUR ASSURANCE THAT NINTENDO® HAS APPROVED THE QUALITY OF THIS PRODUCT. ALWAYS LOOK FOR THIS SEAL WHEN BUYING GAMES AND ACCESSORIES TO ENSURE COMPLETE COMPATIBILITY WITH YOUR GAME BOY® SYSTEM. ALL NINTENDO PRODUCTS ARE LICENSED BY SALE FOR USE ONLY WITH OTHER AUTHORIZED PRODUCTS BEARING THE OFFICIAL NINTENDO SEAL OF QUALITY.

LICENSED BY



NINTENDO, GAME BOY AND THE OFFICIAL SEALS ARE REGISTERED TRADEMARKS OF NINTENDO OF AMERICA INC.

SONY IMAGESOFT AND IMAGESOFT ARE TRADEMARKS OF SONY IMAGESOFT INC. 9200 SUNSET BLVD. SUITE 820 LOS ANGELES, CA 90069

HOOK™ AND ASSOCIATED CHARACTER NAMES ARE TRADEMARKS OF TRI-STAR PICTURES, INC.

© 1991 TRI-STAR PICTURES, INC.
ALL RIGHTS RESERVED

CAUTION DURING USE:

- If you play for long periods, take a 10 to 15 minute break every hour or so.
- This equipment is precision built. Do not use or store it under conditions of extreme temperature, or subject it to rough handling or shock. Do not disassemble the unit.
- Do not touch the connectors or let them come into contact with water, as this can cause malfunction.
- Do not clean the game pak with volatile solvents such as thinner, benzene or alcohol.
- Store the game pak in its protective case when not in use.



Thank you for purchasing

Hook™

TABLE OF CONTENTS

- 6** How to operate
- 7** The Story of Hook
- 9** Starting the Game
- 10** Basic Controls
- 11** The Neverland Map & Compass
- 13** Items to Find
- 16** The Enemies
- 19** The Status Bar
- 19** In the Forests of Neverland
- 20** Neverland's Caves and Underground Caverns
- 21** The Waters of Neverland
- 21** The Town of Neverland
- 22** Neverland's Lagoons
- 22** The Icy Regions
- 23** The Nevertree
- 24** Flying
- 25** Fighting Rufio
- 26** Hook's Ship

HOW TO OPERATE

Insert your Hook™ game pak into your Game Boy® unit.

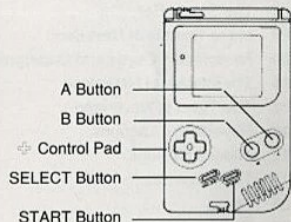
Turn the power on.

Press the **Select Button** (or arrow up/down) to choose your game mode.

The **New Game** will begin a new game.

The **Continue** will allow you to continue a prior game.

Press the **Start** or **A Button** to begin the game.



THE STORY OF HOOK

Grown up and going through life as an attorney with children of his own, Peter Banning never even considered the possibility of returning to Neverland. In fact, he couldn't even remember having been there in the first place! But when the evil Captain Hook returns to grab his children, Granny Wendy is forced to jog his memory into remembering those carefree days when he ran with the Lost Boys in the wild on Neverland. Peter Banning is Peter Pan! Luckily, armed with a wooden sword, the urgings of Granny Wendy, and the friendly advice and help of your friend Tink, you are well equipped for the adventure that lies ahead.

As Pan you will encounter many obstacles and battle many foes in your search for the children. You will be forced to deal with Pirate ghosts and Pirate zombies. In the forests of Neverland you will confront pirates, banana tossing monkeys, rope ladders and seemingly uncrossable streams. At some points you will be forced to fly from one destination to another where you must catch flying marbles to stay aloft.

Along the way you will be developing your skills to prepare yourself as Peter Pan to defeat the evil Hook and win the children's freedom. In order

to be successful in reaching Hook and beating him, you will need to find or earn four special items. You will know when you have found them because you will see a special screen showing what you have collected.

But Neverland is a large island and Hook is a shrewd and elusive character. There are many hazards to avoid along the way and you will need to get past each of them on your way to find Hook and the children. So good luck, and hurry: the children are waiting!

STARTING THE GAME

Insert the **Hook** game pak into your Nintendo Game Boy. Turn the power on. The title screen will be displayed momentarily and then the menu screen will appear automatically.



Place the sword tip next to the menu item you wish to select.

Use the **Select Button** or the **joypad** to move the sword tip. Press the **A Button**, **B Button** or **Start Button** to make your selection at each menu item.

Start – Will start the game at the beginning.

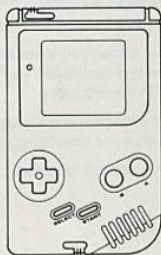
Continue – Allows you to return to the last destination you were at in the last game.

Player 1/2 – **Hook** is a one player or two player alternating game.

Hi Score – Displays top scores.

BASIC CONTROLS

In certain situations, the **Game Boy Controls** will have different uses for controlling Pan's actions. In general, though, the controls have the following functions:



Control pad: *Left* – Move Pan to the left
Right – Move Pan to the right
Down – Pick something up or duck down
Up – Climb a ladder

A Button: Jump, swim, or pick up items

B Button: Thrust sword or use metal detector; Use with **Up** to send Tink to take care of Enemies

Start Button: Make a selection from the menu

THE NEVERLAND MAP & COMPASS

When you begin a new game or continue a game you have already started, you will begin at the map screen. The map screen shows your location in Neverland. If you are continuing a game, you will be placed on the map at the destination where you last were. You select the direction you want Pan to go by changing the direction of the compass arrow. Move the arrow by using the **control pad**. If there is a destination in that compass direction, the name will be displayed below the compass. Choose the destination by pressing the **A Button**.

For each destination, Tink will appear with a warning or message for Pan about that destination. When you have read Tink's message, continue to the destination by pressing the **Start Button**. If you choose a direction for which a

destination is not displayed, Tink appears to tell you that you cannot go in that direction.



Each destination will pose a unique challenge. Pan will encounter enemies in the forest, underground, underwater, in town, in the lagoons, in icy winter scenes and at the Nevertree. While some

destinations are similar, each will have its own solution and you must help Pan find his way through each destination on his way to the next.

If Pan is knocked back or hurt while finding his way through one of Neverland's destinations, he will lose some of his strength. When all of Pan's

strength has been used, he will drop out of the screen from exhaustion and will lose a life. You will need to make sure that Pan avoids getting hurt to keep him going.

When Pan has lost three lives, he will be made to walk the plank off Hook's ship. If you're lucky, Tink will help you continue the search for the children!

ITEMS TO FIND

KEY ITEMS:

These are the items you will need to find in each of the destinations of Neverland which will allow you to find your way out of that destination.



Cherries

Find cherries to complete Neverland forest and Nevertree destinations.



Pearls

Grab the pearls from the hungry clams to complete the underwater boards.



Cakes

Find cakes in the underground destinations.



Coins

Collect gold coins in Neverland to complete those destinations.

TOOLS:



Thimbles

Find thimbles in various Neverland destinations. By using them, Tink will help you out with the Enemies. To give Tink a thimble, press the **Up Button** and the **B Button** at the same time.



Marbles

Use marbles to stay aloft while flying. Marbles can also be collected while on land and used to jump onto pixie dust.



Pixie Dust

There may be pixie dust floating in long spaces between platforms. Use your marbles to jump onto this magic dust as if it were solid; use those marbles wisely, though.



Metal Detector

The metal detector can be found in Neverland's caverns and underground destinations. It is used to find buried treasure. To use it, press the **B Button**. When you find buried treasure, the indicator light will blink and two seconds later, the treasure will appear!



Food

Find food to keep Pan's strength up.

THE ENEMIES

FOREST AND LAGOON ENEMIES



The Hermit floats around the forest looking for Pan.



The Snake hangs down from tree limbs in the forests and lagoons.



Pirates are found almost everywhere in the game and are most certainly allied with the evil Hook.



The Monkey sits on branches of trees in the Neverland forests and jungles and throws bananas in Pan's path.

UNDERGROUND ENEMIES



The Pirate Zombie paces endlessly in the underground areas of Neverland. If Pan is touched by a Pirate Zombie he becomes a zombie for a brief period of time as well and cannot be controlled.



The Pirate Ghosts float around underground as well. They don't always hurt, but don't let them fall on Pan.



The Dragon also lives underground and breathes fireballs at Pan.



Spiders also hang around the walls of the cave and are poisonous to Pan.

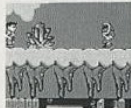
ICY REGION ENEMIES



The **Abominable Snowman** guards the Neverland icy regions by rolling icy snowballs at Pan.



Penguins scoot back and forth across the ice to stop Pan's progress.



Pirate Eskimos are just like all the other Pirates around Neverland, except they have nice warm coats on to protect them against region weather.

UNDER WATER ENEMIES



In the waters around Neverland you'll also encounter these diving gear equipped **Submerged Pirates**. Watch out for their suction cup harpoons! The **Jellyfish** are not much friendlier.

THE STATUS BAR

In the top left hand corner of each destination screen you will see a constantly changing status bar which gives you information on your status for each of the destinations on Neverland, except when you fight Rufio, or take on Hook on his ship at the end of the game. It displays the following information:

- A **bar graph indicator** tells you how much strength Pan has left when on land, and how much air he has left when underwater. Eat food on land to build strength, and surface or find an air pocket to replenish Pan's air supply when underwater.
- How many **thimbles** you have acquired to give to Tink to take care of Enemies for you.
- How many **items** you still need to be able to complete the destination and find the exit to go to the next level.
- How many **marbles** you have found to use pixie dust to cross gaps between platforms.

IN THE FORESTS OF NEVERLAND

Pan must find his way through the forest without letting the pirates get him. The key items to find here are the cherries. The pirates are numerous and while they have certain appointed guard duties, if they see Pan they will come after him. So be careful, these guys are dangerous!

NEVERLAND'S CAVES & UNDERGROUND CAVERNS

Pan must work his way through the underground tunnels and find his way out. Pan must jump over moving platforms, climb ladders and avoid zombies and poisonous spiders as he finds his way through each of these underground mazes. Look for cakes to complete these destinations.



Pan's hungry and helpful friend Thud Butt can also be found in Neverland's underground caverns. Feed Thud Butt and he can blow down any wall he's near.

THE WATERS OF NEVERLAND

Several water scenes also lay between Pan and finding the children and Hook. Pan must swim below the surface in each of these scenes to collect pearls and find his way out. There are lots of dead ends. The display's status bar shows how much air Pan has left when he's under water. Be sure he doesn't run out.

To make Pan swim, use the **control pad** to turn Pan in the direction you want him to go, then press the **A Button** to make him swim. Swim past objects in the water to pick them up.

THE TOWN OF NEVERLAND

Hook's pirates have control of Neverland which was built to look like the deck of a pirate's ship. Cannonballs fly around the town like baseballs. But Pan's not here to play baseball. Look for gold coins.

NEVERLAND'S LAGOONS THE ICY REGIONS

The lagoons of Neverland are a lot like its forests. Use the same strategy to help Pan find his way through them. Look for peaches to complete the boards.

Neverland's varied climate also has a couple of wintery areas. Collect ice sticks to complete them.

Watch out for icicles. If Pan jumps and lands near one, they may come loose and fall on him.

THE NEVERTREE

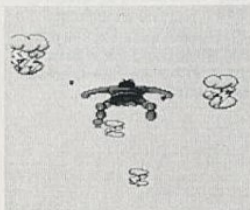
The Nevertree is like no tree you've ever seen. It is big and filled with strong branches and treehuts. There are walkways, trampolines, ropes and ladders for Pan to use to find his way through.



You can earn extra points by shooting baskets. When you see a basketball, bend down and pick it up. Dribble into position and shoot using the **B Button**. Beware, you only have a limited amount of time, then the ball disappears.

FLYING

Many times throughout the game you may see Flying as one of the destinations on the compass. It may be the only way to get from one place to another on Neverland. While in flight, Pan must fly among air balloons and clouds.



Avoid the balloons which carry sticks of dynamite. Catch the balloons which carry marbles. Pan needs to catch as many marbles as he can in order to stay aloft.

Pan can fly right through some of the clouds. Other clouds are electrical storm clouds and may shock Pan out of some of his strength.

When Pan nears his destination he will slowly descend back to land and again consult his map and compass.

FIGHTING RUFIO

At some point, Pan is sure to run into Rufio, the leader of the Lost Boys. In order to gain the respect of the Lost Boys and get the magic sword he needs to defeat Hook, Pan must win a duel with Rufio. Pan is equipped with only a wooden sword. This is one of the toughest fights you will have, so be prepared for a difficult battle.



You can control Pan's movements as follows:

Move Pan Left	control pad left
Move Pan Right	control pad right
Thrust Sword	B Button:
Kneel	control pad down
Kneel and thrust	control pad down & B Button
Jump & turn	A Button
Jump Left	control pad left & A Button
Jump Right	control pad right & A Button

At the top of the screen, two power gauges show Pan's and Rufio's tunics. Each blow tears away at the tunic of the fighter who was hit until finally either Pan or Rufio loses his tunic. When the tunic falls away, only the undershirt will remain on the loser.

HOOK'S SHIP

You must successfully complete all other scenes before you can get to Hook's ship and the final confrontation. Hook must be defeated. He is holding the children hostage and only Pan can save them.

Hook is an expert swordsman. Pan and Hook will battle it out on the deck of Hook's ship. Smee will appear from the portals to try to restrict Pan's movements

by tying a ball and chain to his feet. Jump to avoid it.

Pan can be maneuvered in the same way as when he faced Rufio earlier in the game. Strength levels are shown at the top of the screen as bar graphs. You must outlast Hook to save the children. Whether Pan or Hook tires out first is up to you. Good luck!

*Defeat Hook...
or he'll make you
walk the plank!*

SONY IMAGESOFT INC. LIMITED WARRANTY

Sony Imagesoft Inc. warrants to the original purchaser of this Sony Imagesoft product that this cartridge is free from defects in materials and workmanship for a period of ninety (90) days from the date of purchase. This Sony Imagesoft product is sold "as is," without express or implied warranty of any kind, and Sony Imagesoft is not liable for any losses or damages of any kind resulting from use of this product. Sony Imagesoft agrees for a period of ninety (90) days to either repair or replace, at its option, free of charge, any Sony Imagesoft product. Send product postage paid, along with dated proof of purchase, to the address shown below.

This warranty shall not be applicable and shall be void if the defect in the Sony Imagesoft product has arisen through abuse, unreasonable use, mistreatment or neglect. THIS WARRANTY IS IN LIEU OF ALL OTHER WARRANTIES AND NO OTHER REPRESENTATIONS OR CLAIMS OF ANY NATURE SHALL BE BINDING ON OR OBLIGATE SONY IMAGESOFT. ANY

IMPLIED WARRANTIES APPLICABLE TO THIS PRODUCT, INCLUDING WARRANTIES OF MERCHANTABILITY AND FITNESS FOR A PARTICULAR PURPOSE, ARE LIMITED TO THE NINETY (90) DAY PERIOD DESCRIBED ABOVE. IN NO EVENT WILL SONY IMAGESOFT BE LIABLE FOR ANY SPECIAL, INCIDENTAL, OR CONSEQUENTIAL DAMAGES RESULTING FROM POSSESSIONS, USE OR MALFUNCTION OF THIS SONY IMAGESOFT PRODUCT.

Some states do not allow limitations as to how long an implied warranty lasts and/or exclusions or limitations of incidental or consequential damages, so the above limitations and/or exclusions may not apply to you. This warranty gives you specific rights, and you may also have other rights which vary from state to state.

SONY IMAGESOFT INC.
9200 Sunset Boulevard, Suite 820
Los Angeles, CA 90069
(213) 858-3777