

**ROTTEN FOOD...
KILLER BEES ...NELSON
THE BULLY...A
PSYCHO-CRIMINAL
BUNK COUNSELOR
ON THE LOOSE?**

*Sounds like Bart & Lisa
need your help to...*

**ESCAPE
FROM
CAMP
DEADLY!**



The Simpsons™ TM and © 1991 Twentieth Century Fox Film Corporation. All rights reserved. Acclaim is a trademark of Acclaim Entertainment, Inc. Game Boy and the official seals are trademarks of Nintendo of America Inc. © Acclaim Entertainment, Inc.
PRINTED IN JAPAN

Acclaim
entertainment inc



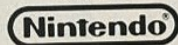
GAME BOY



INSTRUCTION BOOKLET

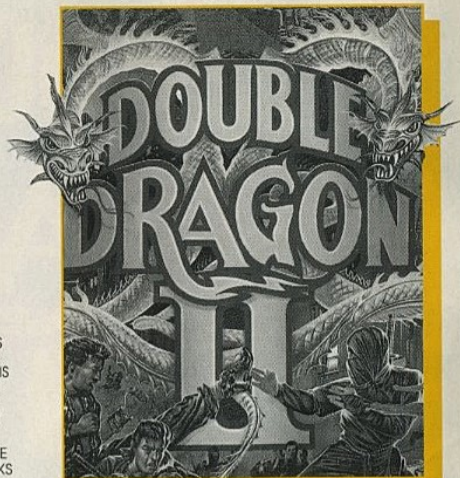
Acclaim
entertainment inc

LICENSED BY



THIS OFFICIAL SEAL IS YOUR ASSURANCE THAT NINTENDO HAS APPROVED THE QUALITY OF THIS PRODUCT. ALWAYS LOOK FOR THIS SEAL WHEN BUYING GAMES AND ACCESSORIES TO ENSURE COMPLETE COMPATIBILITY WITH YOUR GAME BOY SYSTEM.

NINTENDO®, GAME BOY AND THE OFFICIAL SEALS ARE TRADEMARKS OF NINTENDO OF AMERICA INC.



CONTENTS

THE TALE OF THE DOUBLE DRAGON	3
PREPARE TO HIT THE STREETS	6
SELECT YOUR GAME	7
SECOND PLAYER	8
YOUR SCREEN	9
KNOW THE BASICS	10
EXPAND YOUR SKILLS	11
10 MISSIONS LIE AHEAD	12
EXPLORE YOUR SURROUNDINGS	13



THE TALE OF THE DOUBLE DRAGON

Your name is Billy Lee. You're young, but you've already lived through enough agony to fill three lifetimes. You saw your city obliterated in a nuclear war. You saw roving gangs of thugs take over the streets. You learned the hard way that "might makes right" is the rule of law in a world where only the strong survive.

Then you saw your girlfriend get gunned down by the Black Shadow Warriors. And you felt helpless as they destroyed your home: the world-famous

Double Dragon dojo, home of the mighty Double Dragon Warriors.

You knew what had to be done.

You applied every scrap of martial arts knowledge and succeeded in wiping out the Black Shadow Warriors. It wasn't easy, but you did it. Finally, you were able to rest.

But not for long.

Anxious to keep your skills sharp, you and your brother Jimmy joined the Scorpions.



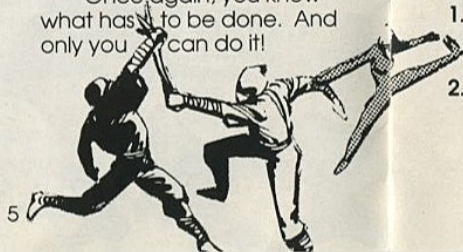
You saw the envy and hatred that burned in Anderson's eyes. You knew he would be trouble someday, but you never dreamed he would eliminate Wright (another Scorpion instructor), scrawl your name on the floor, and pin the blame on you! You were horrified when Gordon actually believed Anderson's twisted tale of evil and ordered you and Jimmy to pay for the crime... with your lives.

Now the war has spilled out of the dojo and into the streets. You must battle countless enemies bent on your destruction, as you prowl nightmarish

urban ruins in search of one man who framed you and another who ordered your death.

There must be no mercy. You must clear your name. You have all the tools you need to get the job done: fists of fire, feet of fury, and the martial arts skills of the Double Dragon.

Once again, you know what has to be done. And only you can do it!



PREPARE TO HIT THE STREETS

1. Make sure the GAME BOY power switch is OFF.
2. Insert the Double Dragon II cartridge as described in your Nintendo GAME BOY instruction manual.

3. Turn the power switch ON.

When you see the DOUBLE DRAGON II title screen, press the START BUTTON.



SELECT YOUR GAME

Three skills levels are available to you when you first press the START BUTTON: Easy, Normal, and Hard. Press the LEFT or RIGHT CONTROL PAD ARROWS to indicate which level you prefer.

Once you've chosen your skill level, use the UP or DOWN CONTROL PAD ARROWS to determine whether you will play a 1 player or 2 player game, and whether you are beginning a new game or continuing a previous game.

Note: When playing a 2 player game, you will need to connect the units with the video link cable.

When you're ready to hit the streets, press the START



7

BUTTON. A brief overview of The Tale of the Double Dragon will appear. To bypass the story, press the START BUTTON two more times.



SECOND PLAYER

If you choose to add (buy-in) a second player, just follow the following instructions: Player #1 press select. A buy-in screen will appear. Now connect the 2 Game Boy units together with the game link cable. Player #2 turns

Note: In a 2 player game, both players will appear on both screens. The second player's man will appear faded on the first player's screen, and vice-versa.

on Game Boy and waits for title screen to appear, then presses START. A game select screen will now appear on the unit of player #2. Player #1 then hits the START button. A counter will tick down from 8 to 0 and then the game will start.

Note: A second player cannot buy-in on mission #10.

8



YOUR SCREEN

Your DOUBLE DRAGON II display provides you with all the essential survival information you need:

STRENGTH

(When this meter decreases from 6 units to 0 units, you lose a life.

Note: Your strength is replenished to 6 units each time you successfully complete one of the 10 missions.)



LIVES REMAINING SCORE
(Each heart represents one life.)



KNOW YOUR BASICS

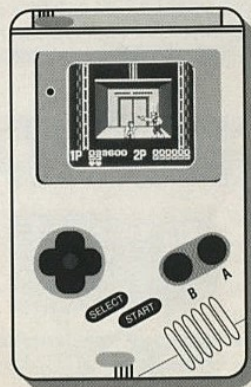
TO MOVE around the screen, use the LEFT, RIGHT, UP, and DOWN CONTROL PAD ARROWS.

TO GRAB an enemy by the collar, move in close by using the CONTROL PAD ARROWS.

TO PUNCH an enemy, press the A BUTTON.

TO KICK an enemy, press the B BUTTON.

TO PAUSE the game, press the START BUTTON. To restart the game, press the START BUTTON again.

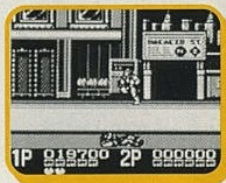
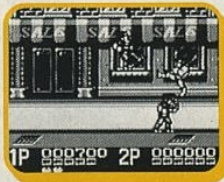




EXPAND YOUR SKILLS

The following moves set a Double Dragon Warrior apart from the rest of the martial arts pack:

A HIGH KICK is delivered when you press the B BUTTON after you've weakened your enemy to the point where he is in the crouching position.



A FLYING KNEEDROP is delivered when your opponent is down and you press either the A or B BUTTON. (NOTE: You must be standing near your opponent to execute this move.)

11



AN AERIAL UPPERCUT is delivered when you press the A and B BUTTONS simultaneously twice. (NOTE: The first time you press the buttons you will move into a kneeling position. You must press them again to complete the move.)



10 MISSIONS LIE AHEAD

Your martial arts skills will be put to the test on 10 missions as you move through the city. Along the way a map will update you on your progress. NOTE: This happens after mission 4 and 8 only.



12



EXPLORE YOUR SURROUNDINGS



There are three dangerous areas you must negotiate if you are to find the building that shields Anderson and Gordon: Streets (mission 1, 5, 9), subway platforms (missions 2, 4, 6, 8), and subway cars (mission 3, 7).



Mission 10 will take you into the building you seek, but beware: Dangers lurk on every floor and in every elevator! You will need to



call upon all the mental discipline of your Double Dragon training if you are to reach Anderson and Gordon's inner sanctum!

ACCLAIM ENTERTAINMENT, INC. LIMITED WARRANTY

Acclaim Entertainment, Inc. (Acclaim) warrants to the original purchaser only of this Acclaim software product that the medium on which this computer program is recorded is free from defects in materials and workmanship for a period of ninety (90) days from the date of purchase. This Acclaim software program is sold "as is," without express or implied warranty of any kind, and Acclaim is not liable for any losses or damages of any kind resulting from use of this program. Acclaim agrees for a period of ninety (90) days to either repair or replace, at its option, free of charge, any Acclaim software product, postage paid with proof of date of purchase, at its Factory Service Center. Replacement of the cartridge, free of charge to the original purchaser (except for the cost of returning the cartridge) is full extent of our liability.

This warranty is not applicable to normal wear and tear. This warranty shall not be applicable and shall be void if defect in the Acclaim software product has arisen through abuse, unreasonable use, mistreatment or neglect. THIS WARRANTY IS IN LIEU OF ALL OTHER WARRANTIES AND NO OTHER REPRESENTATIONS OR CLAIMS OF ANY NATURE SHALL BE BINDING ON OR OBLIGATE ACCLAIM. ANY IMPLIED WARRANTIES APPLICABLE TO THIS SOFTWARE PRODUCT INCLUDING WARRANTIES OF MERCHANTABILITY AND FITNESS FOR A PARTICULAR PURPOSE, ARE LIMITED TO THE NINETY (90) DAY PERIOD DESCRIBED ABOVE IN NO EVENT WILL ACCLAIM BE LIABLE FOR ANY SPECIAL, INCIDENTAL OR CONSEQUENTIAL DAMAGES RESULTING FROM POSSESSION, USE OR MALFUNCTION OF THIS ACCLAIM SOFTWARE PRODUCT.

Some states do not allow limitations as to how long an implied warranty lasts and /or exclusions or limitations of incidental or consequential damages so the above limitations and/or exclusions of liability may not apply to you. This warranty gives you specific rights, and you may also have other rights which vary from state to state.

This warranty shall not be applicable to the extent that any provision of this warranty is prohibited by any federal, state or municipal law which cannot be pre-empted.

COMPLIANCE WITH FCC REGULATIONS

This equipment generates and uses radio frequency energy and if not installed and used properly, that is, in strict accordance with the manufacturer's instructions, may cause interference to radio and television reception. It has been type tested and found to comply with the limits for a Class B computing device in accordance with the specifications in Subpart J of Part 15 of FCC Rules which are designed to provide reasonable protection against such interference in a residential installation. However, there is no guarantee that interference will not occur in a particular installation. If this equipment does cause interference to radio or television reception, which can be determined by turning the equipment off and on, the user is encouraged to try and correct the interference by one or more of the following measures: Reorient the receiving antenna - Relocate the NES with respect to the receiver - Move the NES away from the receiver - Plug the NES into a different outlet so that the computer and receiver are on different circuits.

If necessary, the user should consult an experienced radio/television technician for additional suggestions. The user may find the following booklet prepared by the Federal Communications Commission helpful: How to Identify and Resolve Radio-TV Interference Problems. This booklet is available from the U.S. Government Printing Office, Washington, DC 20402. Stock No. 004-000-00345-4.

Acclaim Hotline (516) 624-9300 Distributed and marketed by Acclaim Entertainment, Inc.

71 Audrey Avenue, Oyster Bay, New York 11771

Double Dragon II: The Revenge™ TM & © 1989 Technos Japan, Corp., licensed to Tradewest, Inc. Licensed exclusively to Acclaim Entertainment, Inc. All rights reserved. Nintendo®, Game Boy® and the official seals are registered trademarks of Nintendo of America Inc. Acclaim® is a registered trademark of Acclaim Entertainment, Inc. © 1991 Acclaim Entertainment, Inc. All rights reserved. Printed in Japan.