

SETA
SETA U.S.A., INC.

*THANK YOU FOR PURCHASING
BATTLE BULL™*

WATCH FOR MORE EXCITING TITLES TO COME..

Printed in Japan

Nintendo

GAME BOY™

DMG-BR-USA

SETA
SETA U.S.A., INC.

BATTLE BULL™

INSTRUCTION BOOKLET

THIS OFFICIAL SEAL IS YOUR ASSURANCE THAT NINTENDO HAS APPROVED THE QUALITY OF THIS PRODUCT. ALWAYS LOOK FOR THIS SEAL WHEN BUYING GAMES AND ACCESSORIES TO ENSURE COMPLETE COMPATIBILITY WITH YOUR GAME BOY SYSTEM.



LICENSED BY



Nintendo, *GAME BOY* and the Official Seals are trademarks of Nintendo of America Inc.
©1990 Nintendo of America Inc.

THANK YOU FOR SELECTING



DISASTER ON PERSEUS VI.....	1	2-PLAYER MODE.....	10
CONTROLLER FUNCTIONS.....	4	THE BUGS.....	11
GETTING STARTED.....	5	SETA'S LIMITED WARRANTY.....	12
SCREEN DISPLAYS.....	8		

Please read this instruction booklet carefully before starting to play and keep this booklet in a safe place for future reference.

Disaster has struck the deep space mining operation on Perseus VI. Remote control mining robots in the Mondo Oro 8 mine have been infected with a computer virus that has caused them to go berserk, attacking anything that enters the mine. The Company has enlisted your services to clean up this messy little problem.

What's in it for you?

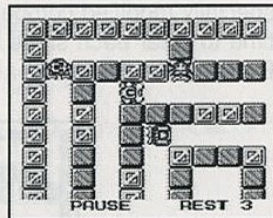
Well the "Bugs", as they are called, not only mine the ore but also process it in their "bodies". Bash a bug, bag the bullion. That's right, you get to keep all the gold inside the bug when you crush it.



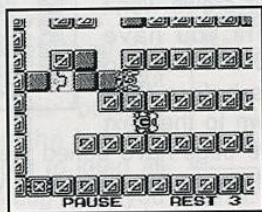
No problem, right?

Not so fast, Bud. You see, there are 48 levels to this mine and every level is littered with ore blocks.

Also, the bugs have destroyed all the elevators and you'll have to watch out for the open shafts. The elevator repair crews won't enter a level until you have cleared it so you will have to clear all the bugs before they can lower you down to the next level. Some of the bugs have buried themselves beneath the floor and will come out of hiding when they need reinforcements.



After you clear a stage you can return to the surface and shop for equipment to mount on the Battle Bull, your specially modified combat dozer. You have a set amount of time to clear each stage before The Company sends in the Reclamation Units to seal off the level.



3

CONTROLLER FUNCTIONS

- SELECT BUTTON-** DISPLAYS PASSWORD WHILE IN THE SHOP.
- START BUTTON-** GAME START
PAUSE/RESUME DURING GAME PLAY.
- A BUTTON-** PUSH BLOCK. IF ANOTHER BLOCK RESTS IN FRONT OF IT, PUSHING WILL CRUSH IT.
- B BUTTON-** JUMP OR USE WEAPON.
- CONTROL PAD-** MOVES BATTLE BULLDOZER.

4

GETTING STARTED

AFTER CORRECTLY INSERTING THE BATTLE BULL GAME PAK IN YOUR **GAME BOY™** AND TURNING ON THE POWER, THE **NINTENDO SCREEN** WILL APPEAR FOLLOWED BY THE **TITLE SCREEN**. PRESS THE **A BUTTON** TO ENTER **1 PLAYER MODE**.

THE NEXT DISPLAY IS THE **MAINTENANCE SHOP**. YOU CAN ENTER 5 DIFFERENT AREAS TO PURCHASE ITEMS WITH GOLD THAT YOU COLLECT IN THE MINE.



5

USE THE **CONTROL PAD** TO MOVE THE POINTER TO THE BOX CONTAINING THE ITEMS YOU NEED AND PUSH THE **A BUTTON**.

ENGINE • STEP UP TO INCREASE SPEED

- 1- **TURBO** • ONLY SLIGHTLY FASTER THAN ORIGINAL ENGINE.
- 2- **TWIN TURBO** • QUITE A BIT FASTER THAN TURBO.
- 3- **TURBO JET** • ABLE TO OTRUN THE FASTEST MISSILE.



SHOVEL • IMPROVE TO RECOVER FASTER AFTER PUSHING.

- 1- **SIMPLE SHOVEL** • A LITTLE STRONGER.
- 2- **SHARP SHOVEL** • MORE STRENGTH THAN SIMPLE SHOVEL.
- 3- **STRONG SHOVEL** • NO DELAY AFTER PUSHING. BREAK BLOCKS ON THE RUN BY HOLDING DOWN THE A BUTTON.

6

JUMP • IMPROVE THE HEIGHT AND DISTANCE OF JUMPS.

1- **SHORT JUMP** • MAKES SHORT JUMPS, STRAIGHT UP AND DOWN.

2- **HIGH JUMP** • HIGHER JUMPS, CAN JUMP 5 BODY LENGTHS.

3- **SUPER JUMP** • HIGHEST, CAN JUMP 7 BODY LENGTHS.

WEAPON • JUMPERS ARE REMOVED WHEN ADDING WEAPONS.

1- **VULCAN** • CAPABLE OF DESTROYING BUGS.

2- **GRENADE** • CAN DESTROY BUGS OR SINGLE BLOCKS.

3- **MISSILE** • DESTROYS ALL BUGS AND BLOCKS IN ITS PATH.

1-UP • Enter this section to purchase more lives.

Select **GAME START** to start on stage 1 (it's a good idea to buy the **TURBO** engine before you start). As soon as you drop in to a level, the bugs will begin to appear. You must try to crush the bugs by pushing a block into them with the A Button. You start the game with three lives. If you lose all of your lives you can continue at the same level but will lose your gold.

PLAY SCREEN:

In addition to Battle Bull and the Bugs, here's some other things you'll find in the mine.

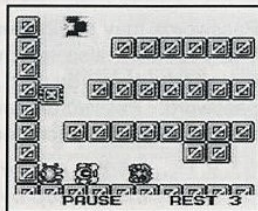
BLOCK: Moves any direction.

COLUMN: Can't be pushed (actually, it holds up the ceiling, so pushing it probably wouldn't be a good idea, anyway!).

SC: SCORE

T(XX): TIME REMAINING TO RECLAMATION

E(XX): ENEMY LEFT



ELEVATOR SHAFT: Some shaft doors still operate so that you can run across them while they are closed.

ORE CRATES: These crates can only be moved in the direction of the arrow.

After "disinfecting" the first level (Stage One), you can then buy a jumper to help with the next levels. Jumpers and weapons are activated with the B Button. You can't mount both jumpers and weapons at the same time.

PASSWORDS

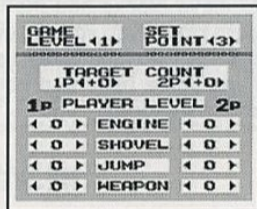
Passwords may be entered at start-up to return to a specific level. The password also returns certain items. These items must be installed when you first enter the shop after starting with a password. Passwords don't return the amount of gold held when the password was recorded.

The password can be viewed while in the shop by pressing the select button.

2-PLAYER GAME

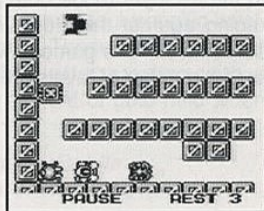
To play the 2-Player mode you will need two *Game Boys*™ with Battle Bull game paks and the *Game Link*™ cable. After correctly inserting the Game Paks and cable, select **2-PLAYERS** at the title screen. The next screen allows you to modify game play features and select equipment for the two opposing Battle Bulls.

In the 2-Player mode both players are racing against the clock to clear the same level. The game is won when a preset number of levels are cleared.



THE BUGS

There were 11 different types of mining apparatus in operation on Perseus VI when the virus invaded the Central Control Station. The only bugs that were not infected were the Reclamation Units, as they were not in use at the time. Some of the bugs were designed to tunnel or pulverize ore blocks. These bugs will crush through free-standing blocks to attack you. Other bugs were built to move blocks and they will try to push blocks into you. A few bugs are built as lifters and loaders so the only thing these bugs can do is try and chase you down.



11

SETA LIMITED WARRANTY

SETA U.S.A., Inc. (SETA) warrants to the original purchaser of this SETA software product that the medium on which this computer program is recorder is free from defects in materials and workmanship for a period of ninety (90) days from the date of purchase. Products returned to us or at the factory service center must be accompanied by a receipt. In the absence of such a purchase receipt, the warranty period shall be ninety(90) days from the date of manufacture, indicated on the software product. This SETA software program is sold "as is," without express to implied warranty of any kind, and SETA is not liable for any losses or damages of any kind resulting from use of this program. SETA agrees for a period of ninety (90) days to either repair or replace, at its option, free of charge, any SETA software product, postage paid, with proof of date of purchase, at its Factory Service Center.

This warranty is not applicable to normal wear and tear. This warranty shall not be applicable and shall be void if the defect in the SETA software product has arisen through abuse, unreasonable use, mistreatment or neglect. THIS WARRANTY IS IN LIEU OF ALL OTHER WARRANTIES AND NO OTHER IMPLIED WARRANTIES APPLICABLE TO THIS SOFTWARE PRODUCT, INCLUDING WARRANTIES OF MERCHANTABILITY AND FITNESS FOR A PARTICULAR PURPOSE, ARE LIMITED TO THE NINETY (90) DAY PERIOD DESCRIBED ABOVE. IN NO EVENT WILL SETA BE LIABLE FOR ANY SPECIAL, INCIDENTAL, OR CONSEQUENTIAL DAMAGES RESULTING FROM POSSESSION, USE OR MALFUNCTION OF THIS SETA SOFTWARE PRODUCT. Some states do not allow limitations as to how long an implied warranty lasts and/or exclusions or limitations of incidental or consequential damages so the above limitations and/or exclusions of liability may not apply to you. This warranty gives you specific rights, and you may also have other rights which vary from state to state.

SETA U.S.A., INC. 105 E. Reno Avenue Suite 22
Las Vegas, Nevada 89119 (702) 795-7996

12